

TECHNICAL SPECIFICATIONS

Porter Ballroom at the Huizenga Pavilion



BROWARD
CENTER

— *for the* —

PERFORMING ARTS

Fort Lauderdale, Florida
November 2023

TABLE OF CONTENTS

GENERAL CONTACT INFORMATION.....	2
MAP & DIRECTIONS.....	3
PARKING.....	3
SITE PLAN	5
LOADING DOCK INFO	7
PORTER BALLROOM DIMENSIONS.....	7
PORTER BALLROOM GROUND PLAN.....	8
PORTER BALLROOM SOUND AND COMMUNICATIONS.....	12
PORTER BALLROOM LIGHTING INFORMATION	13
DRESSING ROOM / WARDROBE INFORMATION.....	19

Porter Ballroom in the Huizenga Pavilion

at the
Broward Center for the Performing Arts

201 Southwest 5th Avenue
Fort Lauderdale, FL 33312
Main Office (954) 522-5334 (M-F 8:30A-5:30P)
Main Fax 954-468-2549
Box Office 954-468-3338

PRODUCTION

Director of Production	Herman Montero	(954) 468-2557	hmontero@browardcenter.org
Production Manager	Christopher Jahn	(954) 765-5802	cjahn@browardcenter.org
Production Supervisor	Christina Baroniel	(954) 468-3317	cbaroniel@browardcenter.org
Production Supervisor	Halle Kilman	(954) 765-5819	hkilman@browardcenter.org
Production Coordinator	Jessica Mendoza	(954) 468-3319	jmendoza@browardcenter.org
Production Admin Assistant	Oriana Urdaneta	(954) 468-6906	ourdaneta@browardcenter.org
Production Fax		(954) 468-3315	
Stage Door Security Desk		(954) 468-3323	

EVENT SERVICES

Vice President of Operations	Shelly Bradshaw	(954) 468-2696	sbradshaw@browardcenter.org
Director of Event Services	Pablo Urquilla	(954) 468-3313	purquilla@browardcenter.org
Senior Event Services Manager	Kerry McCloskey	(954) 414-6905	kmccloskey@browardcenter.org

FOOD & BEVERAGE STAFF

Director of Food & Beverages	Vinny Venezia	(954) 468-3337	vvenezia@browardcenter.org
Special Events/Catering Mgr	Kirstie Gothard	(954) 660-6348	kgothard@browardcenter.org
Asst Special Events/Catering	Alex Riccardi	(954) 765-5806	ariccardi@browardcenter.org

ADDITIONAL CONTACTS INFORMATION

Vice President of Programming	Matt MacNeil	(954) 468-3312	mmcneil@browardcenter.org
Director of Programming	Jill Kratish	(954) 468-3295	jkratish@browardcenter.org
Director of Guest Services	David Dillon	(954) 468-3305	ddillon@browardcenter.org
Director of Security	Tom Harrington	(954) 660-6356	tharrington@browardcenter.org
Admin. Mgr F&B – Merch	Mark Deuser	(954) 660-6387	mdeuser@browardcenter.org

MAP & DIRECTIONS

The Broward Center is conveniently located in the Riverwalk Arts & Entertainment District in downtown Fort Lauderdale, equidistant between Dade and Palm Beach Counties and can be reached by several routes.

From Interstate-95:

Exit at Broward Boulevard, Go east.

From Florida Turnpike (southbound):

Exit at Sunrise Boulevard, Go East to South-bound I-95, exit Broward Boulevard, Go east.

From Florida Turnpike (northbound):

Exit at I-595, Go East to North-bound I-95, exit Broward Boulevard, Go east.

To Backstage Parking Lot:

From Broward Boulevard turn right (South) onto SW 7th Avenue (Avenue of the Arts). Turn left at West Las Olas Blvd (the second light). Take an immediate left into the backstage lot security gate. Push the buzzer to contact guard. Identify yourself and guard will let you enter.

To Parking Garage and Valet:

Broward Boulevard. Turn South onto SW 5th Avenue.

The Arts and Science Parking Garage is on the immediate right, or, proceed straight ahead, cross 2nd Street (Himmarshee St.) and continue to the top of the hill for valet service.

From Fort Lauderdale Airport to Backstage Lot:

Take the "US1 / Federal Highway Northbound" exit out of the Airport. Travel North on US1 to SE 17th Street Causeway. Turn left (West) and go to SW 4th Avenue and turn right (North). SW 4th Avenue will become SW 7th Avenue at the bridge. Go over the bridge, turn right at West Las Olas Blvd. Take an immediate left into the backstage lot security gate. Push the buzzer to contact guard. Identify yourself and guard will let you enter.

North Gate - Trucks going to Loading Dock:

From Broward Boulevard turn South onto SW 5th Avenue. Turn right at Second Street (Himmarshee Street). The gate entrance to back-stage lot is on your left. Push the buzzer to contact guard. Identify yourself and guard will let you enter.

GPS Address (only for use with GPS)

To the backstage Security gate:
641 West Las Olas Boulevard
Fort Lauderdale

To the North Gate (trucks & buses)
582 SW 2nd Street
Fort Lauderdale FL



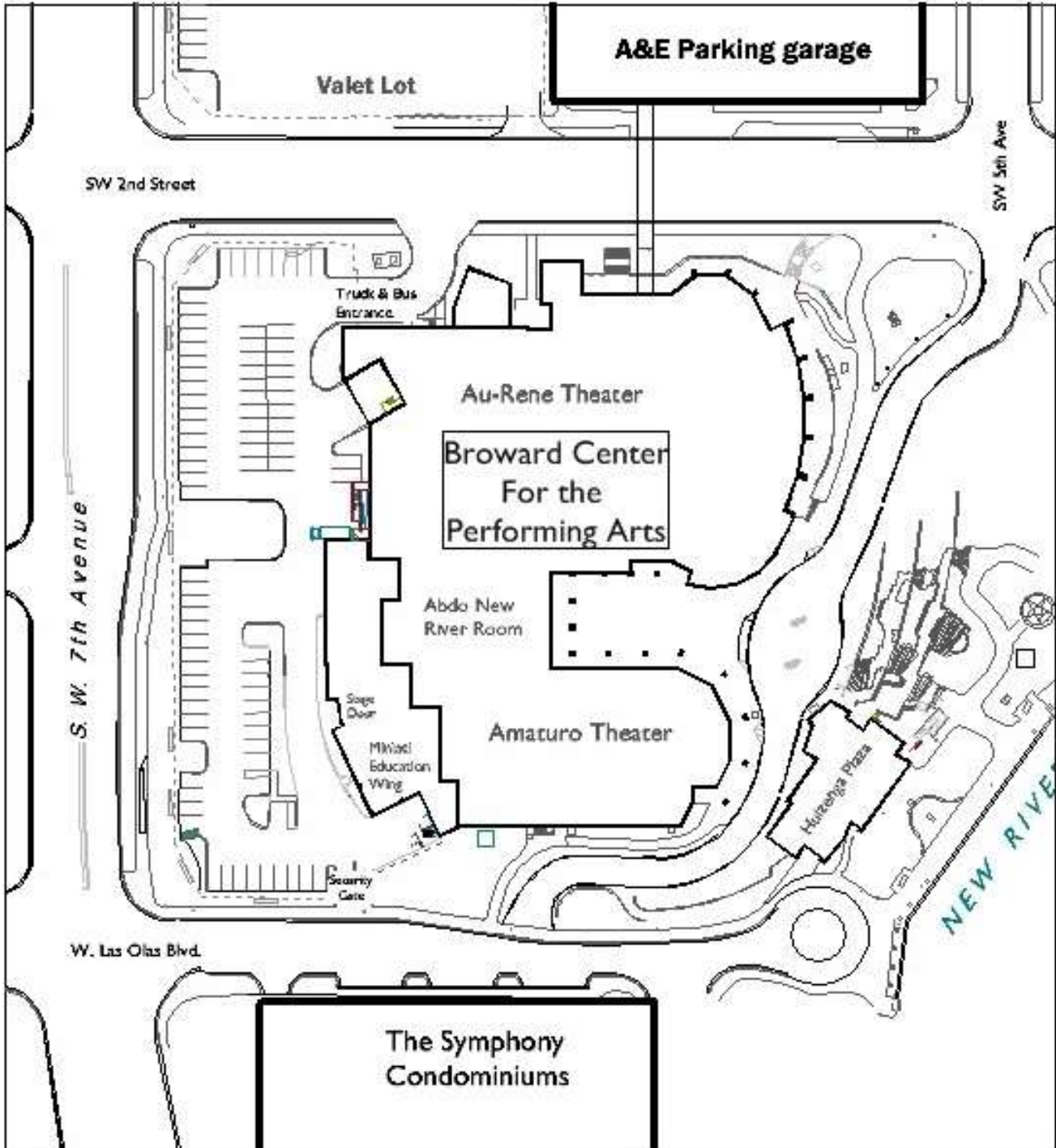
VEHICLE PARKING

Parking on site is very limited. All parking arrangements must be discussed prior to the event for necessary passes and badges for access.

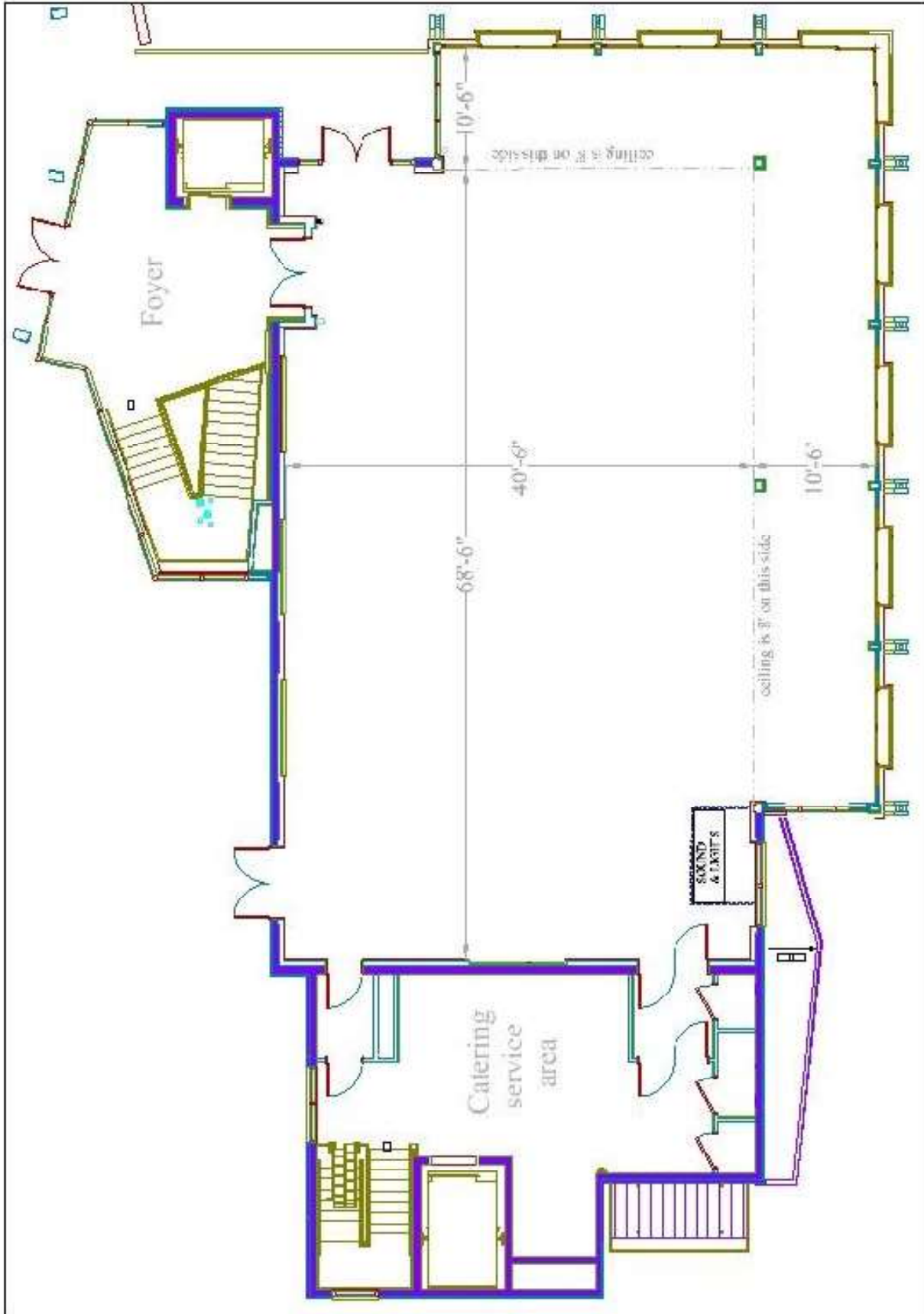
BCPA Parking Lot



Broward Center Site Plan



Huizenga Pavilion Floor Plan – Porter Ballroom



Porter Ballroom - no scale

LOADING DOCK

The Huizenga Pavilion has its own loading dock, located on West Las Olas Boulevard, on the south end of the building on the first floor.

The elevator doors are 4' wide by 7' high, and the interior space is 9' by 5'-6".

SEATING INFORMATION AND CAPACITY

The Porter Ballroom has a number of different seating configurations, depending on the type of event.

ROOM SPECIFICATIONS

The Porter Ballroom is laid out to accommodate a stage along the north wall between the dual projection screens. There is a portable riser system that consists of three 6' by 8' platforms that can be adjusted to heights of 16" or 24" that can be used to create a stage with dimensions of 24' by 6', or 18' by 8'.

The main part of the room is 68' 6" across by 40' 6" deep. The veranda (the portion of the room with the lower ceiling and marble floor) is 10' 6" wide. The ceiling of the veranda is 8' tall, while the main room ranges in height from 13' to 18', with 12" deep beams protruding lower into the room in places.

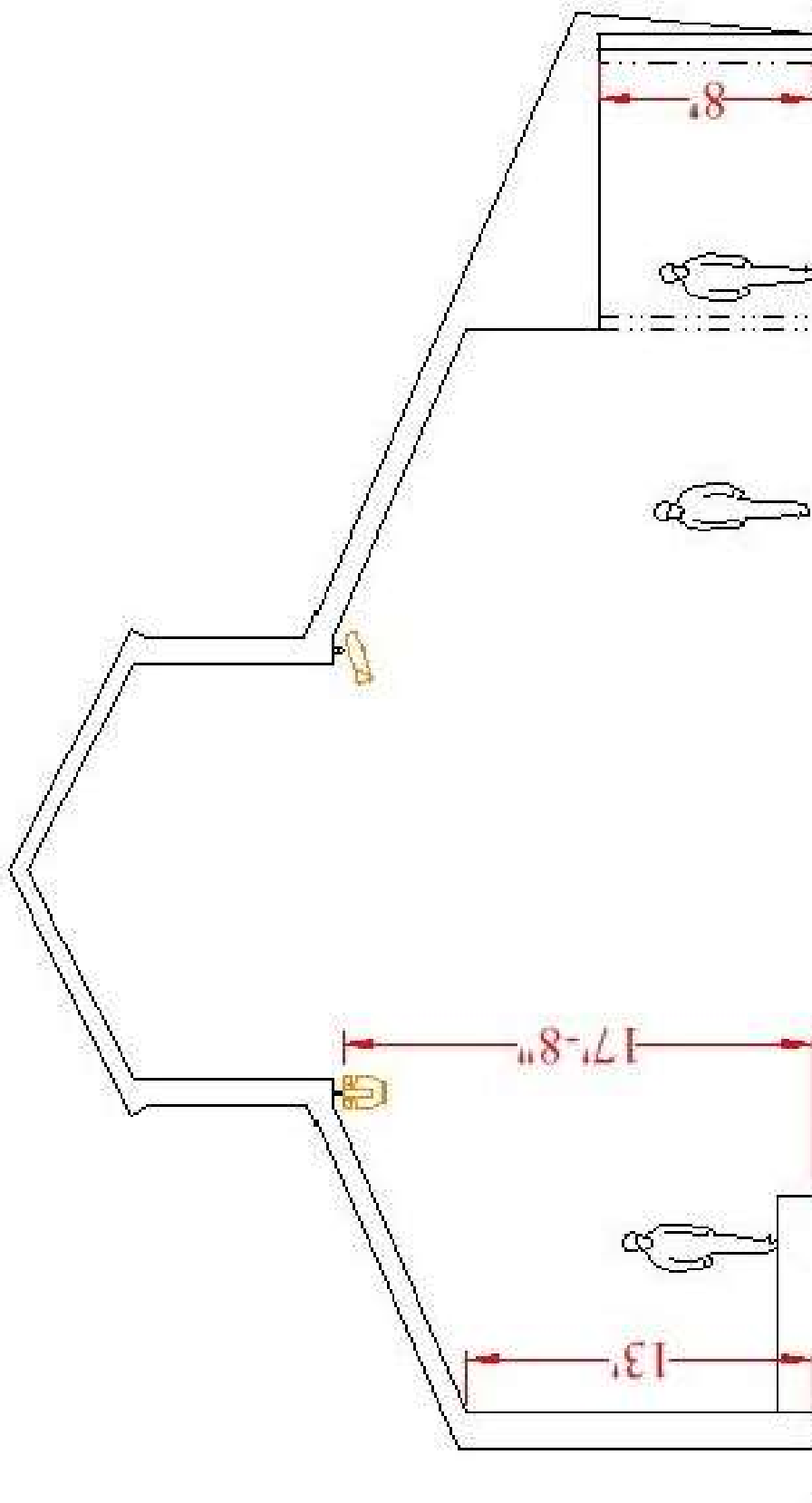


View of Porter Ballroom set for a wedding reception, from southeast corner.



View of Johnny Swim concert in the Porter Ballroom, view from southeast corner.

ROOM SECTION – PORTER BALLROOM



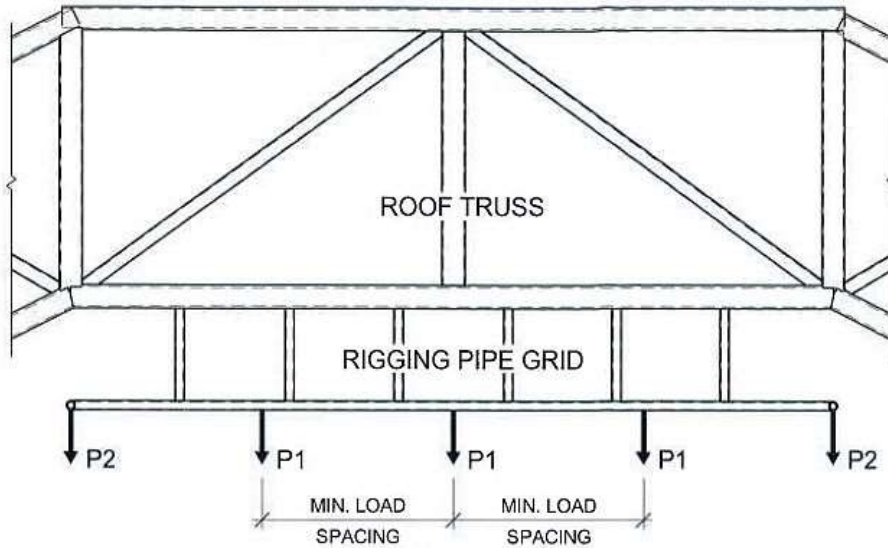
rev 6-27.15
no scale

Porter Ballroom
Elevation view

RIGGING SPECIFICATIONS

The Porter Ballroom is equipped with a rectangular pipe grid running round the perimeter of the room's skylight at a height of 17' 8"

Weight load per the table below:



LOAD TYPE	MAXIMUM LOAD	MINIMUM SPACING
INTERIOR POINT LOAD, P1	100 LB	1 FT
INTERIOR POINT LOAD, P1	250 LB	2.5 FT
INTERIOR POINT LOAD, P1	500 LB	5 FT
INTERIOR POINT LOAD, P1	1000 LB	10 FT
CORNER POINT LOAD, P2	500 LB	2 FT
UNIFORM LOAD	100 LB / FT	NO LIMIT
TOTAL RIGGING LOAD	12,000 LB	N/A

NOTE: TOTAL RIGGING LOAD IS MAXIMUM TOTAL OF ALL THEATRICAL LOADS, OR OTHER TEMPORARY EQUIPMENT LOADS, SUSPENDED FROM THE ENTIRE PIPE GRID SIMULTANEOUSLY. LOADS SHOWN ABOVE ARE STATIC LOADS. ALLOWABLE DYNAMIC LOADS SHALL NOT EXCEED 1/3 OF THE STATIC LOADS. THE PIPE GRID SHALL NOT BE USED TO LIFT OR SUPPORT SUSPENDED PERSONNEL LOADS.

MAXIMUM ALLOWABLE RIGGING LOAD TABLE

BROWARD CENTER FOR PERFORMING ARTS - PAVILION		TLC JOB No: 511006	
DATE: 3-18-2014	 874 Dixon Blvd. Cocoa, Florida 32922 PH: 321.636.0274 Fax: 321.639.8986 www.tlc-engineers.com	©Copyright 2012 TLC Engineering for Architecture, Inc.	
DESIGNED: A.L.		COA #15	
CHECKED: G.C.K.			

SOUND AND COMMUNICATIONS

SOUND MIX POSITION –

Primary position is located in the south east corner of the room.

FRONT OF HOUSE CONSOLE

Yamaha LS 9-32 (32 x 16 x 8)

SOURCE PLAYBACK GEAR

(1) TASCAM CD-500B

SPEAKERS

The room is equipped with an installed array of 20 ceiling-mounted Audio-Technik E8 series speakers around the main room and 13 ceiling mounted JBL 200 Series speakers above the veranda. The speakers above the default stage area can be muted, as can the speakers located along the veranda.

MICROPHONES

(6) Channels of wireless microphones, SHURE QLX H50
6 hand held SM 58
6 body packs with MX153-t headset mics

Multi-Media

The Porter Ballroom is equipped with dual Christie M Series LCD projectors and 16:9 ratio screens (13' by 8') that retract into the ceiling along the west wall. Playback is available from a built in Denon MP-B20-B-T Blu-Ray/DVD player, or sources connected to one of the two video panels (VGA & HDMI) (located in the control booth or adjacent to the stage area). Up to four laptops can be connected in the control booth via a Kramer switcher.



View of a workshop breakfast from the north east

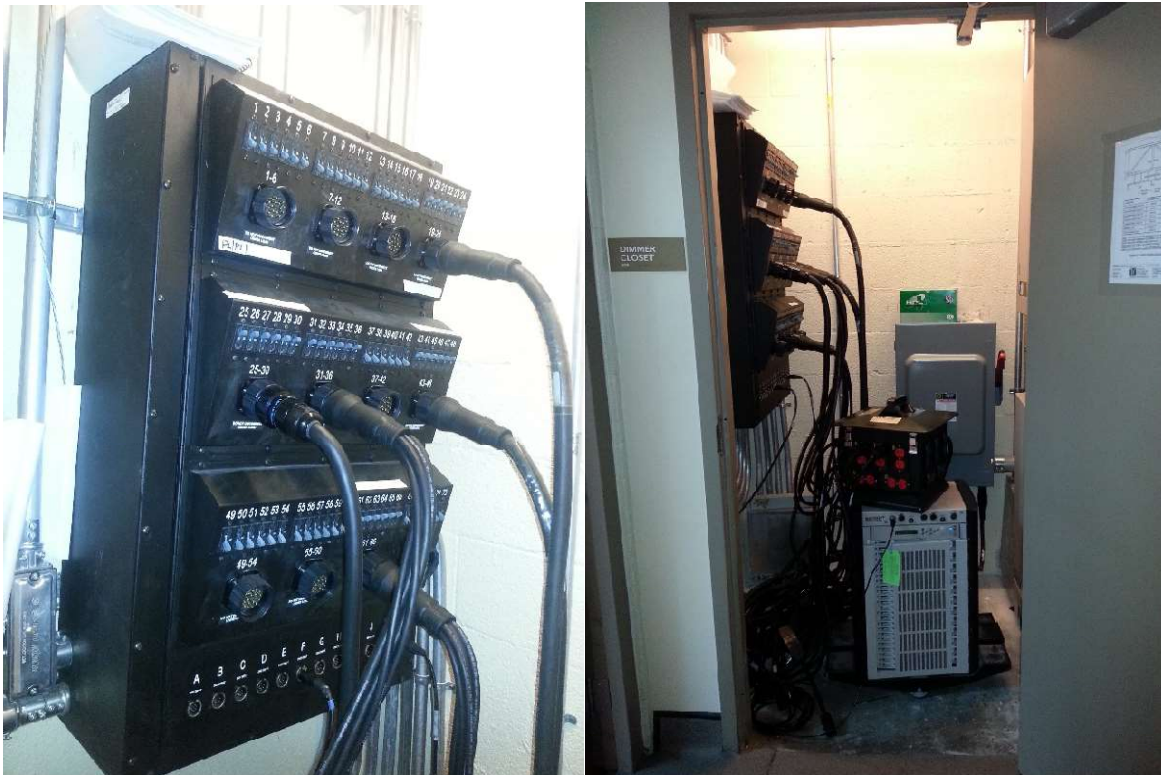
LIGHTING INFORMATION

CONTROL

- I ETC Element console, 2 monitors
- I ETC Sensor portable rack (24)

POWER DISTRIBUTION

The Porter Ballroom does not have an installed dimmer system: a small utility room with a 400 amp disconnect is provided, and there is an LSC multi-cable patch panel to connect a portable rack into 6 circuit panels distributed around the room. There is also a DMX patch bay. DMX ports run to each circuit panel in the room.



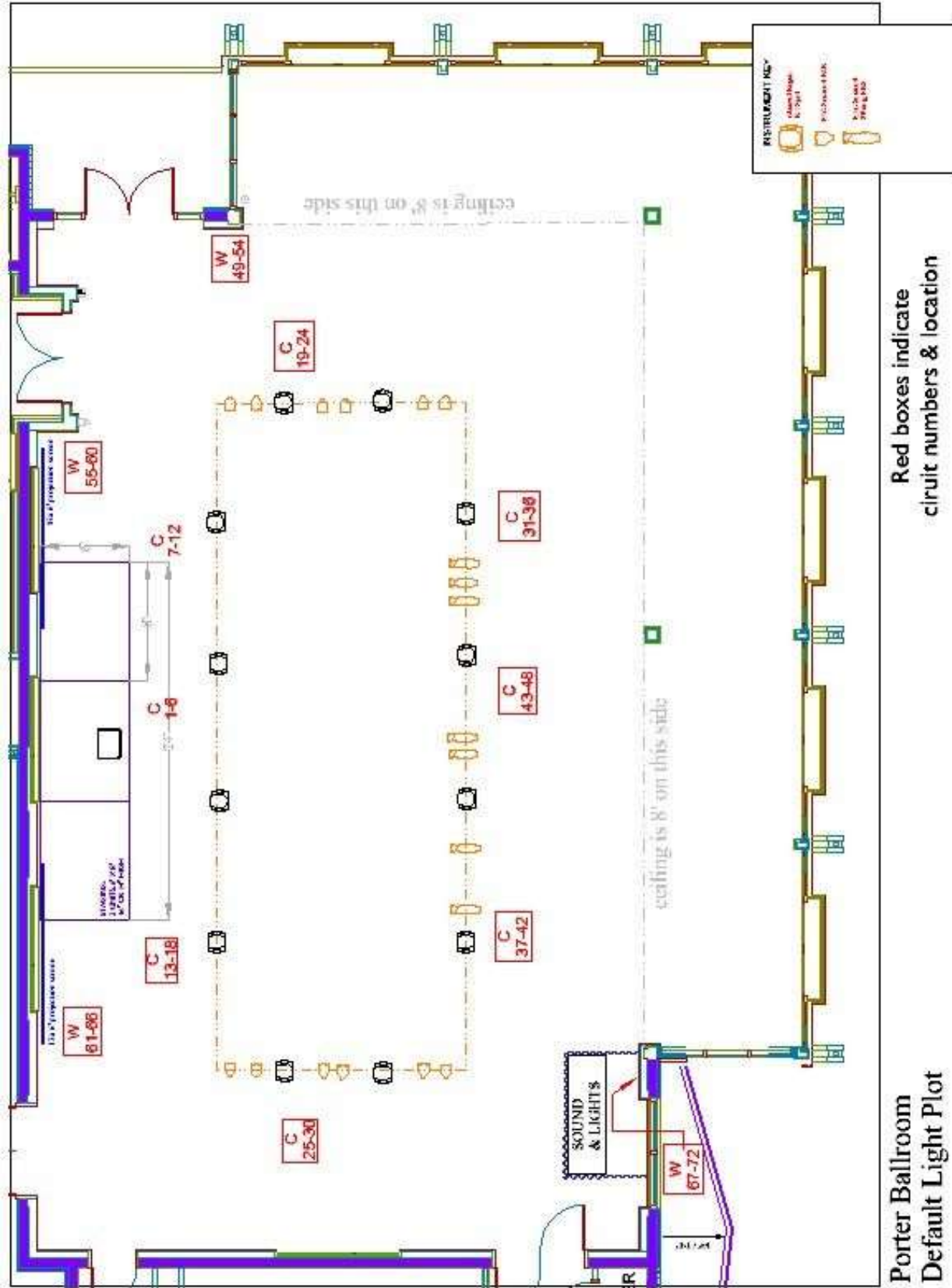
FOLLOWSPOTS

There are no follow spots in the Porter Ballroom.

COMPLETE INVENTORY

Unit Description	Detail	Total	Hanging	Storage
15 amp 6 circuit break-out	Edison Male	4		
15 amp 6 circuit break-in	Edison female	4		
Moving Light fixture	Chauvet Rogue R1	12	12	

LIGHTING PLOT



LIGHTING MAGIC SHEET

Channel Hookup

1 1 Dimmer Luminaire_Incandescent
2 2 Dimmer Luminaire_Incandescent
3 3 Dimmer Luminaire_Incandescent
4 4 Dimmer Luminaire_Incandescent
5 5 Dimmer Luminaire_Incandescent
6 6 Dimmer Luminaire_Incandescent
7 7 Dimmer Luminaire_Incandescent
8 8 Dimmer Luminaire_Incandescent
9 9 Dimmer Luminaire_Incandescent
10 10 Dimmer Luminaire_Incandescent
11 11 Dimmer Luminaire_Incandescent
12 12 Dimmer Luminaire_Incandescent
13 13 Dimmer Luminaire_Incandescent
14 14 Dimmer Luminaire_Incandescent
15 15 Dimmer Luminaire_Incandescent
16 16 Dimmer Luminaire_Incandescent
17 17 Dimmer Luminaire_Incandescent
18 18 Dimmer Luminaire_Incandescent
19 19 Dimmer Luminaire_Incandescent
20 20 Dimmer Luminaire_Incandescent
21 21 Dimmer Luminaire_Incandescent
22 22 Dimmer Luminaire_Incandescent
23 23 Dimmer Luminaire_Incandescent
24 24 Dimmer Luminaire_Incandescent
101 2/101-119 Rogue_RI_Spot_19ch Luminaire_LED_Yoke_Spot
102 2/120-138 Rogue_RI_Spot_19ch Luminaire_LED_Yoke_Spot
103 2/139-157 Rogue_RI_Spot_19ch Luminaire_LED_Yoke_Spot
104 2/158-176 Rogue_RI_Spot_19ch Luminaire_LED_Yoke_Spot
105 2/177-195 Rogue_RI_Spot_19ch Luminaire_LED_Yoke_Spot
106 2/196-214 Rogue_RI_Spot_19ch Luminaire_LED_Yoke_Spot
107 2/215-233 Rogue_RI_Spot_19ch Luminaire_LED_Yoke_Spot
108 2/234-252 Rogue_RI_Spot_19ch Luminaire_LED_Yoke_Spot
109 2/253-271 Rogue_RI_Spot_19ch Luminaire_LED_Yoke_Spot
110 2/272-290 Rogue_RI_Spot_19ch Luminaire_LED_Yoke_Spot
111 2/291-309 Rogue_RI_Spot_19ch Luminaire_LED_Yoke_Spot
112 2/310-328 Rogue_RI_Spot_19ch Luminaire_LED_Yoke_Spot

ADDITIONAL EQUIPMENT

Staging equipment

(3) StageRight FR2404 6' x 8' fold and roll risers (height 16" or 24") with skirting

(2) rolling step units (works with either 16" or 24" high risers)

Lecterns